



Baltic States Philatelic Society

Bulletin #1

April 2010

Dear BSPS member,

Over a year since the originally planned date (due to my family growing bigger) it is now my pleasure to present to you the first edition of the BSPS Bulletin, our monthly electronic publication. I will be published on our website, www.baltic-philately.com, I will send you the exact link via email you provided. If you don't have an email address and/or do not like to use the computer I will be happy to mail you a printed copy for an additional \$2/month fee.

It will include general Society news, original and translated articles, and anything else related to Baltic Philately you would like to see in this publication. We will also accept ads from members (free) and dealers (for a fee)

Kindest regards,
Anatoly Chlenov (President and Bulletin Editor)

General Society information

BSPS Bulletin mailing address:

Baltic States Philatelic Society
5719 Drysdale ct, San Jose, CA 95124
USA

BSPS Board of directors:

Peter Devenis (ingadevenis@aol.com)
Maris Tirums (mxtirums@hotmail.com)
Randy Tuuri (tuurifam@comcast.net)

BSPS Executives:

President: Anatoly Chlenov (achlenov@yahoo.com)
Secretary: Vesma Grinfelds (dzvesma@sprintmail.com)
Treasurer: Dzintars Grinfelds (zzipzin@yahoo.com)

BSPS news

BSPS member meetings during Westpex will resume in April 2011 please forward me your thoughts and/or comments

At WESTPEX 2010, Dzintars Grinfelds (age 20 in the Youth Class) earned a WESTPEX Vermeil Medal and a Polonus Philatelic Society Gold medal for his expanded 3 frame exhibit entitled: The Republic of Central Lithuania.

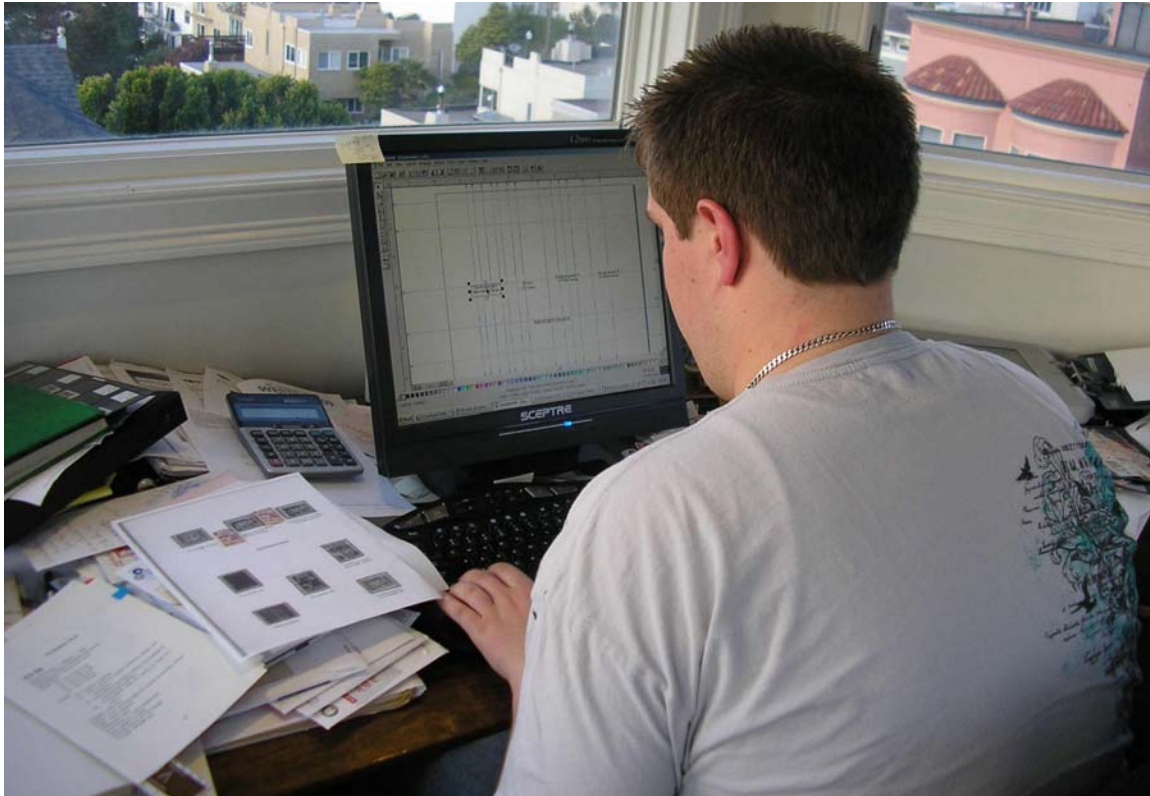


Photo 1: What I did on my Spring Break from university



Photo 2: Finally finished - proud of Title Page and page with Central Lithuania postal stationery card (RARE)!



WESTPEX
SPECIAL AWARD

WESTPEX
SPECIAL AWARD

The Republic of CENTRAL LITHUANIA

The Republic of Central Lithuania was established in 1918 after the First World War. It was a short-lived state that existed until 1920. The republic was formed by the Lithuanian Provisional Government and the Polish Provisional Government. It was a constitutional republic with a president and a parliament. The republic was a member of the League of Nations. It was a neutral state and did not participate in the Second World War. It was annexed by the Soviet Union in 1940 and by Poland in 1939.



Year	Number of stamps issued	Number of covers	Number of letters
1918	100	50	100
1919	200	100	200
1920	300	150	300
1921	400	200	400
1922	500	250	500
1923	600	300	600
1924	700	350	700
1925	800	400	800
1926	900	450	900
1927	1000	500	1000
1928	1100	550	1100
1929	1200	600	1200
1930	1300	650	1300
1931	1400	700	1400
1932	1500	750	1500
1933	1600	800	1600
1934	1700	850	1700
1935	1800	900	1800
1936	1900	950	1900
1937	2000	1000	2000
1938	2100	1050	2100
1939	2200	1100	2200
1940	2300	1150	2300

POSTAL STATISTICS



COAT OF ARMS OVERPRINT ISSUE

COAT OF ARMS OVERPRINT ISSUE



PICERBA





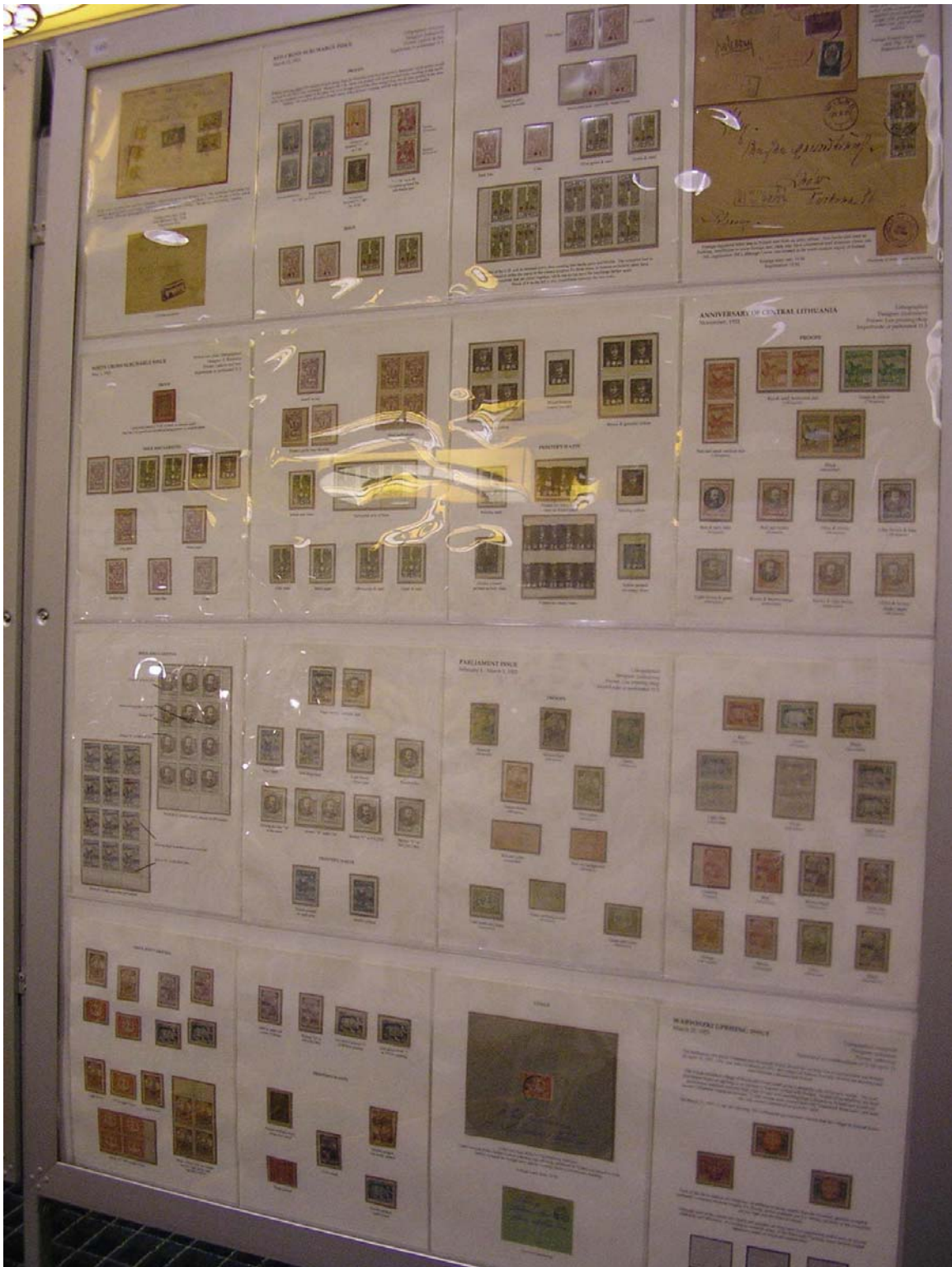


Photo 3-5: The exhibit in its frames at WESTPEX

Original article

Latvian Air Mail Correspondence Forwarded by the Airplane Crew

By Yehoshua Eliashiv

Letters and postcards submitted directly to the airplane crew belong to one of the most interesting chapters of Latvian aerophilately.

With the beginning of regular airmail service from Riga to southern and northern directions all airmail correspondence was collected in the Riga Head Post Office. Special postboxes were placed in different post offices and there was a separate counter in the Head Post Office for this purpose. However, the arrival of sacks with post was often delayed for one or more days. In order to avoid this delay in urgent cases, direct handling of air correspondence by the aircraft crew was permitted. Postal items of this kind were usually sent by people with close relationships to the staff of airlines and forwarding companies.

The postcard (Figure 1), which depicts a G 23 airplane at the Tempelhof airfield in Berlin, was written by an employee of the Nord-Europa-Union and addressed to Frankfurt/Main. It was correctly franked with the 15 santimi postcard rate plus the 20 ruble (40 santimi) airmail surcharge and handed directly to staff in Spilve airport. Apparently, no immediate flight was available. This presumption is explained by single line handwritten endorsement in German, "Flugmaessig" ("on the scheduled flight"). Finally the postcard reached its first stop in Koenigsberg, where it received a circular date stamp and flight confirmation cachet.



Figure 1 (reduced to 50% of the original size)

The cover from the Lettisch-Russische Speditions & Transport Gesellschaft (Latvian-Russian Forwarding & Transport Company) (Figure 2) hides an even more amazing story. It was prepared for registered (IERAKSTIT) airmail delivery to Finland. Its mixed franking of 20 rubles (40 sant.) plus 50 sant. paid the letter rate of 25 sant., the registry fee of 25 sant. and the 40 sant. airmail surcharge. Posted urgently at Spilve airport, this cover (according to its handwritten endorsement in Estonian) was delivered to Helsinki on the fifth of September 1925. The post office there apparently refused to handle a registered cover which wasn't postmarked at its point of origin. It was returned to Tallinn and cancelled

by the TALLINN-AERONAUT 7.9.25 date stamp. On the same day, Monday, the cover finally reached it's destination in Helsinki. The flight confirmation cachet and Helsinki 7.9.25 date stamp are on the reverse side. So far no additional item of this kind has been recorded. (I thank Mr. Urmas Wompa for his kind assistance with translating from Estonian).



Figure 2 (reduced to 45% of the original size)

The "Deruluft" cover (Figure 3) was submitted to the airplane crew and cancelled by the company's office seal: "Deutsch-Russische Luftverkehrs-Gesellschaft Flugleitung Riga". It has the postal rate for a letter, 30 santimi, and the 25 santimi airmail surcharge. The Berlin 30.7.29 transit date stamp is on the reverse side.



Figure 3 (reduced to 50% of the original size)

With the opening of a post office at the Riga Airport in 1935 this service was discontinued. Any additions or comments on this theme will be accepted with high appreciation.

Advertisement

1. Looking for postal history of early independence Estonia and Latvia (1918-1919), especially mail between Baltics and Russia. Top prices paid or a lot of Baltic material available for trade. By Anatoly Chlenov (achlenov@yahoo.com)
2. Seeking: Latvia 100 Ruble stamp (1922 – Sc. 112) showing its usage on cover or anything! By Dzintars Grinfelds (zzipzin@yahoo.com)
3. Do you have oval TPO postage due markings from Latvia on covers or cards? I am seeking to expand and update the list of earliest and latest known usages which was part of an article recently published. Scans and information would be gratefully accepted. By Vesma Grinfelds (dzvesma@sprintmail.com)
4. Looking for covers from Estonia 1918-1940 sent to locations outside of Europe. By Randy Tuuri (tuurifam@comcast.net)
5. Looking for used Lithuanian #1-8 stamps as I collect by positions (can send want list by positions). I am also interested in Lithuanian provisional cancels 1919. Willing to buy or trade for similar or other Baltic material. By Greg Wilson (wilson.greg@ssd.loral.com)
6. Wanted: Cover and usages from Central Lithuania. Please send scans to: zzipzin@yahoo.com. By Dzintars Grinfelds